

Ashfield Road, Midhurst, GU29 9JX

Offers Over £450,000

🛏️ 4 🚿 1 🚗 1



An extended Victorian terraced home, offering four bedrooms, an extended Kitchen and dining room and a separate family room. Located a moment's walk from Midhurst Primary School and the amenities of Midhurst Town.

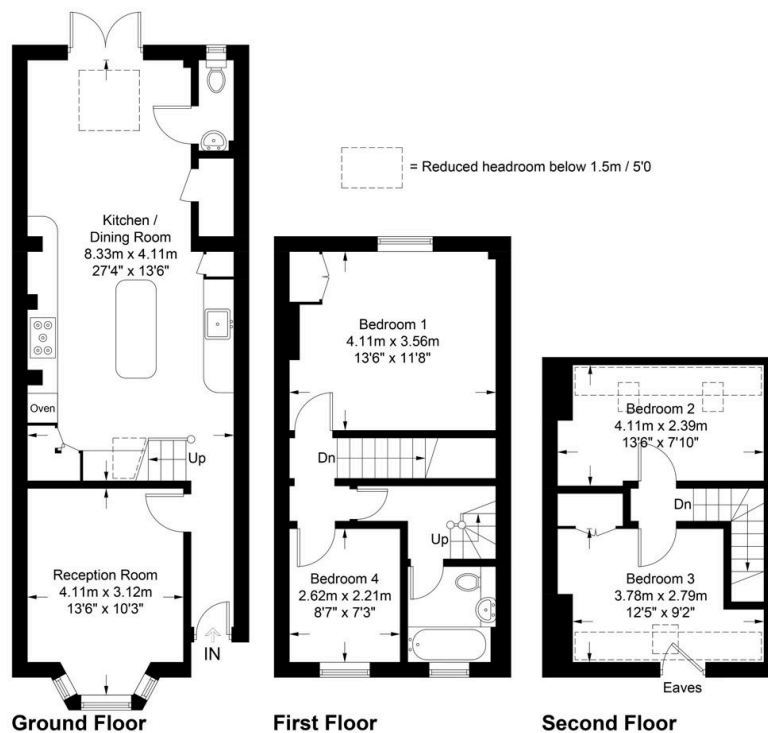
DANIEL ARROWSMITH



Key Features

- Extended Victorian Home
- Spacious and Stylish Kitchen and Dining Room
- West Facing Garden with Rear Access
- Downstairs Cloakroom
- Walking Distance to Town Centre
- Four Bedrooms
- Separate Lounge
- Modern Bathroom
- Located Moments from Midhurst Primary School
- Situated on a One Way Street

Approximate Gross Internal Area = 107.3 sq m / 1155 sq ft



These plans are for representation purposes only as defined by RICS - Code of Measuring Practice. Not to Scale. (ID1105898)